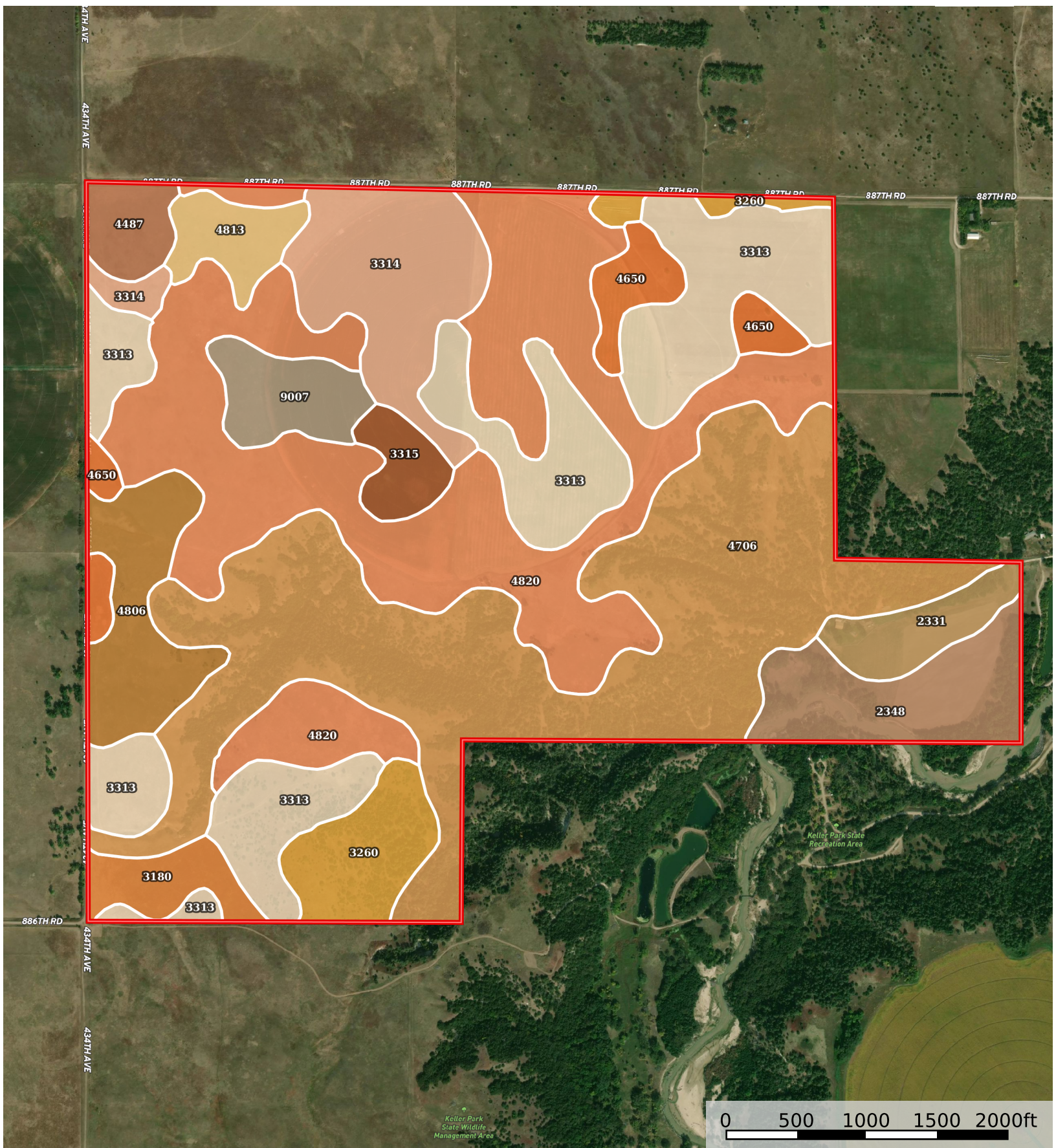


598 +/- Acres, Brown County, NE Nebraska, AC +/-



 Boundary

|  Boundary 599.18 ac

SOIL CODE	SOIL DESCRIPTION	ACRES	%	CPI	NCCPI	CAP
4706	McKelvie-Longpine-Ronson complex, 17 to 70 percent slopes	157.2 6	26.25	0	3	7e
4820	Valentine loamy fine sand, 3 to 9 percent slopes, moist	151.3 7	25.26	0	23	6e
3313	Ronson-Longpine fine sandy loams, 0 to 2 percent slopes	91.94	15.34	0	24	3e
3314	Ronson-Longpine fine sandy loams, 2 to 6 percent slopes	40.16	6.7	0	24	3e
2348	Inavale sand, channeled, occasionally flooded	28	4.67	0	17	6w
4806	Valentine fine sand, rolling, 9 to 24 percent slopes, moist	25.35	4.23	0	17	6e
3260	Oneill fine sandy loam, 0 to 2 percent slopes	22.51	3.76	0	33	2c
4650	lpage loamy fine sand, 0 to 3 percent slopes	16.25	2.71	54	24	4e
9007	Anselmo fine sandy loam, 0 to 3 percent slopes	14.31	2.39	59	36	2e
2331	Inavale loamy fine sand, rarely flooded	12.57	2.1	0	24	4e
4813	Valentine loamy fine sand, 0 to 3 percent slopes, moist	11.07	1.85	0	24	4e
3180	Jansen fine sandy loam, 0 to 2 percent slopes	10.64	1.78	0	37	2e
4487	Dunday loamy fine sand, 0 to 3 percent slopes, moist	9.1	1.52	0	26	4e
3315	Ronson-Longpine fine sandy loams, 6 to 11 percent slopes	8.65	1.44	0	23	4e
TOTALS		599.1 8(*)	100%	2.87	18.48	5.09









(*) Total acres may differ in the second decimal compared to the sum of each acreage soil. This is due to a round error because we only show the acres of each soil with two decimal.

Capability Legend

Increased Limitations and Hazards

Decreased Adaptability and Freedom of Choice Users

Land, Capability

								
	1	2	3	4	5	6	7	8
'Wild Life'	•	•	•	•	•	•	•	•
Forestry	•	•	•	•	•	•	•	
Limited	•	•	•	•	•	•	•	
Moderate	•	•	•	•	•	•		
Intense	•	•	•	•	•			
Limited	•	•	•	•				
Moderate	•	•	•					
Intense	•	•						
Very Intense	•							

Grazing Cultivation

(c) climatic limitations (e) susceptibility to erosion

(s) soil limitations within the rooting zone (w) excess of water